



**HotSpring®**

*Every day made better™*



*Highlife® Collection NXT*

# *Every Day Made Better™*

We made our first hot tub 40 years ago in an era when people just wanted to relax and have fun. Once a symbol of the free-spirited 1970s, hot tubs are for a new generation today. We build and design Hot Spring® spas for people who believe how they live each day defines them.

We believe our products can enhance your life. You might even say we think a Hot Spring spa can give you a better life. Making that true for you is what defines us. Because we know when you spend time in your spa often, better things can happen.

Better health. Better sleep. Better relationships. Better perspective. Better (Fill in the blank).

If you aspire to be your best every day, then a Highlife® NXT spa is ideal for you. This exceptional collection of spas takes better to a new level.

## *Better Health & Better Sleep*

Regular hot tub use helps you be your best. Spending time in warm water can reduce stress, increase circulation and improve sleep. Set aside time to refocus. Start each day refreshed, then use the spa to unwind in the evening.

## *Better Relationships*

Your spa is a place where family and friends can come together. Relaxed and free from distractions, we let our guard down and open up to the people we care about most. We form meaningful bonds and connections that extend beyond spa time together.

## *Better Day (and Night)*

When you are enjoying your hot tub in the fresh, open air, it is easy to appreciate things like the changing morning light, or shooting stars. The experience can provide a sense of peace and perspective. Who knew that you could make your home even more special with a personal garden retreat?

## *Better (Fill In the Blank)*

How will your Hot Spring spa make your days better? Share your experience with our community of passionate hot tub enthusiasts. Or just read what others are saying at [Hotspring.co.uk](https://hotspring.co.uk).







# Reach Beyond Ordinary

Breaking from the status quo is how you live your life. From maintaining a home that reflects pride of ownership to staying active and focused on health and well-being, every part of your life says, "I want what's best for me and my family." We do too.

## *A Revolutionary Design*

Four decades after we built our first spa, we revolutionised the concept of a hot tub with great design. Great design inspires. It fulfills and personalises. It reaches us in ways we could not have predicted.

Great design enhances functionality, solves problems and simplifies. It elevates the ordinary to the realm of the extraordinary. When we set out to build a best-of-class spa, we partnered with Designworks, a BMW Group Company, a world-renowned design consultancy known and respected for its design innovation.

## *Leading the Way*

As the industry leader, we focus on providing customers with The Absolute Best Hot Tub Ownership Experience™. Since the beginning, we have propelled our industry from quirky redwood tubs to architecturally inspired, low maintenance, energy-efficient, hydrotherapy powerhouses.

Innovations like our Moto-Massage™ DX jet, synthetic, low-maintenance siding, No-Fault™ heater, dedicated circulation pump, and the ACE® Salt Water System are all industry firsts. We have not just made owning a hot tub better, we have dramatically enhanced the spa ownership experience. And now we have redefined what a spa should look like with a fresh perspective and design expertise. Introduced in 2014, our popular Highlife® Collection NXT expands with two new model additions. We invite you to experience it for yourself.







# Creating A Truly Superior Spa

## The NXT Difference

Until now, most people considered a spa's exterior design as kind of ordinary. With the Highlife® Collection NXT spas, we have changed that perception. The visual impact of the new exterior design is stunning and surprisingly different.

Like the rest of the Highlife Collection, the NXT models feature beautifully sculpted shells and the rich, wood-grain finish of our Everwood™ HD siding. NXT spas also include exclusive value-added features, like 100% no-bypass filtration and our one-of-a kind Energy Smart™ system that keeps operating costs to a minimum.

The exterior design is the distinct difference that separates NXT spas from other models in the Highlife Collection. The striking NXT is a much sleeker spa.

A recessed base pan, under-cabinet accent lighting and architectural corners create its unique “floating” effect. Like a piece of high-end furniture, the contemporary look of an NXT spa is unmatched in style and function. Do not be fooled by a design copycat—there is only one Highlife Collection NXT.



### *Polymeric Substructure*

The lightweight polymeric substructure provides outstanding support and excellent fit and finish.



### *Polymeric Base Pan*

The heavy-duty base pan features structural ribbing on the bottom that increases energy efficiency by minimising ground contact.

# Spa Design, Elevated

Designed in partnership with Designworks, a BMW Group Company, NXT spas are sleek, contemporary, and cutting-edge.

**Designworks**  
A BMW Group Company

## Unique Floating Effect

The innovative design of the polymeric substructure and recessed base pan make the spa appear as if it is standing on its corners.

## Architectural Molded Corners

For distinctive style, the trapezoidal shape creates a cascading effect from spa shell to base that is repeated throughout the spa's interior. An intricate textured finish adds depth and dimension.

## Exterior and Under-cabinet Accent Lighting

You can adjust the colour and brightness of the spa's exterior lighting and set them to turn on and off at specific times. Under-cabinet accent lighting and each of the corner sconce lights integrate to create a dramatic impact.

## Large On/Ready Indicator Lights

A sleek acrylic plate displays the Hot Spring® logo. Thoughtfully designed indicator lights reveal at a glance that the spa is on and ready for you, and serve as a convenient diagnostic tool.







# *Maintaining Spa Water Has Never Been Easier*

One of the myths about spa ownership is that keeping spa water balanced and clean can be a lot of work. Is it time consuming? Is it difficult? Do you need to be a chemist to get it right? No, no, and no.

When you choose an NXT spa from the Highlife® Collection, you not only get the best in spa design, you get The Absolute Best Hot Tub Ownership Experience™, day in and day out. Our exclusive, innovative water care systems keep your spa water fresh and crystal clear with very little maintenance.

## *100% No-Bypass Filtration and Tri-X Filters*

In other spas, water bypasses the filters when the jets are on. Highlife Collection NXT spas include up to five filters, making it possible to run all the water through the filters, even when the jets are on—which is when filtered spa water is most important.

Our Tri-X™ filters use exclusive three-dimensional technology to filter more water than paper filters. They last longer and can be conveniently cleaned in your dishwasher.







## *The Exclusive ACE Salt Water System*

Optional on all Highlife Collection NXT spas, this revolutionary, low-maintenance system cleans the water automatically.

### MORE NATURAL

Enjoy fewer chemicals and more natural spa water. Only the ACE® system creates “active oxygen” and other powerful cleaners from just a little bit of salt and your spa water. So, there are fewer chemicals added.

### SIMPLE CARE

With easy-to-care-for spa water that looks, feels and smells great, you will spend more time in a Hot Spring® spa.

### FEELS BETTER

Forget about the dry skin, irritated eyes or chlorine odour. Using patented diamond technology, only the ACE system eliminates contaminants that impact water quality.

**ACE**<sup>TM</sup>  
SALT WATER SYSTEM

# *Innovations in Energy Efficiency*



Concerned about the ongoing costs of operating your spa year-round? There is no need to worry with our exclusive Energy Smart™ system. These energy-saving features are included on all Highlife® Collection NXT spas:

- Multiple layers of the same high-density polyurethane foam used in commercial freezers insulate the spa shell.
- Our dense foam covers are designed to ensure a custom fit and tight seal that prevent heat from escaping. A special hinge seal locks in heat at the centre of the spa cover.
- Our SilentFlo 5000™ pump continually circulates water, using less energy than a 40-watt light bulb.
- Powerful WaveMaster™ jet pumps are activated only when the jets are needed. Our SmartJet™ system directs water only to the jets you are using, saving even more energy.
- Our patented No-Fault™ heater uses a unique titanium housing and heater element that maximises heat transfer to the water, and it is warranted for five years, regardless of water chemistry.







# *Delivering Real Value*

Our Energy Smart system minimises energy consumption and helps keep your operating costs extremely low. When you consider how frequently you use your spa and the important benefits you will enjoy, relative to the low monthly operating costs, you can see the tremendous value that a Hot Spring® spa can provide you and your family.

## *Setting the Standard*

All Highlife Collection NXT spas are certified to the APSP 14 US Standard and the California Energy Commission (CEC) in accordance with California law.



# Details Make All the Difference

We put luxury and convenience at your fingertips with features that set you up for a better spa experience.



## *Convenient Control*

All the NXT models feature the latest in spa control technology—our wireless touchscreen remote control. The large, waterproof, colour LCD touchscreen serves up intuitive icons and menus that are easy to read by day or night. Conveniently adjust spa functions from your favourite seat inside the spa, or from up to 9 metres outside the spa.

## *Luminescence™ Multi-zone Lighting*

It is a real glow-getter. All NXT models include a unique lighting system that lets you set the mood. Independently control the colour and brightness of four programmable zones. Create a custom theme or set the corner sconces and under-cabinet accent lights (exterior zone) to diffuse pools of colour onto your patio at dusk.

## *Exterior Lighting*

Set the stage. Program corner cabinetry sconce lights and under-cabinet accents in six colours, and from subtle to bright.

## *The Exclusive BellaFontana*

You will enjoy watching the light dance off this innovative water feature, whether you are relaxing inside the spa or spending time on the patio. The BellaFontana™ is included on all models except Jetsetter™ NXT.



# Tune In and Chill Out

Make your Hot Spring® spa into the coolest entertainment destination on the block. You can with options like our wireless entertainment.

## *Wireless Sound System with Bluetooth Technology*

Stream music from an online source or use your own library of songs. The choice is yours with our easy-to-use sound system, featuring Bluetooth® wireless technology. The sound system features a powerful amplifier and optional subwoofer for increased volume and richer bass tones.

## *High-Definition Hot Tubbing*

Entertainment makes a big splash with an optional 56 cm high-definition display. HDMI and USB connectors accommodate a variety of streaming and cable devices. This monitor pairs with the optional wireless entertainment system.



## *Worth the Price of Admission*

The Moto-Massage™ DX jet is the perfect fix for what your body fights all day—gravity. Its two powerful streams of water sweep up and down your back, kneading and soothing thick muscle columns along the spine. There is no other jet like it. This Hot Spring® exclusive is featured on all Highlife® Collection NXT spas.



# GRANDEE NXT

Seating for 7 | 43 jets



## Exclusive Features and Options

- Two Moto-Massage™ DX jets
- Wireless touchscreen remote control
- 100% no-bypass filtration
- Dishwasher-safe Tri-X™ filters
- Comprehensive Energy Smart™ system
- BellaFontana™ water feature
- Programmable exterior lighting
- ACE® salt water system (optional)
- Wireless sound system (optional)
- NXT or Everwood™ HD step (optional)

## *The Grandee NXT Big on features. Big on design.*

The Grandee™ NXT seats seven adults, providing ample space for connecting with the entire family.

The Grandee NXT features all seven types of jets we offer—for a total of 43 jets in all—including 30 directional Precision™ jets, two Moto-Massage DX jets, and an assortment of other speciality massage jets. To power these jets, the Grandee NXT features two of our most powerful 2.5HP WaveMaster™ jet pumps.

*See detailed specifications for the Grandee NXT on page 20.*



*Grandee NXT shell shown in Ice Grey.*



# ENVOY NXT

*Seating for 5 | 43 jets | Lounge*



## *Exclusive Features and Options*

- Moto-Massage™ DX jet
- Captain's chair
- Wireless touchscreen remote control
- 100% no-bypass filtration
- Dishwasher-safe Tri-X™ filters
- Comprehensive Energy Smart™ system
- BellaFontana™ water feature
- Programmable exterior lighting
- ACE® salt water system (optional)
- Wireless sound system (optional)
- NXT or Everwood™ HD step (optional)

## *The Envoy NXT* *Massage you need. Design you want.*

Seating five adults, the Envoy™ NXT is perfect for anyone who wants a large spa with powerful massage, advanced features and innovative design.

The Envoy features a comfortable lounge seat with a Moto-Massage DX jet that sweeps up and down your back while other jets massage calf muscles and the bottoms of your feet. A uniquely sculpted captain's chair provides a full back massage and therapy for the wrists and feet.

*See detailed specifications for the Envoy NXT on page 20.*



*Envoy NXT shell shown in Crème.*

# ARIA NXT

Seating for 5 | 35 jets | Lounge



## Exclusive Features and Options

- Moto-Massage™ DX jet
- Wireless touchscreen remote control
- 100% no-bypass filtration
- Dishwasher-safe Tri-X™ filters
- Comprehensive Energy Smart™ system
- BellaFontana™ water feature
- Programmable exterior lighting
- ACE® Salt Water System (optional)
- Wireless entertainment (optional)
- NXT or Everwood™ HD step (optional)

## *The Aria NXT Huge statement. Just-right size.*

This master class in design seats five adults and incorporates must-have features and sleek styling into one perfect package.

The Aria™ NXT hits all the right notes. A luxurious lounge seat is power-packed with a Moto-Massage DX jet for your back, and other specialty jets. Recover from daily adventures with 35 total jets. It is better than a massage therapist! As you rotate around the seats, it is like getting a full body massage.

*See detailed specifications for the Aria NXT on page 20.*



*Aria NXT shell shown in Alpine White.*

# VANGUARD NXT

Seating for 6 | 38 jets



## Exclusive Features and Options

- Two Moto-Massage™ DX jets
- Wireless touchscreen remote control
- 100% no-bypass filtration
- Dishwasher-safe Tri-X™ filters
- Comprehensive Energy Smart™ system
- BellaFontana™ water feature
- Programmable exterior lighting
- ACE® Salt Water System (optional)
- Wireless entertainment (optional)
- NXT or Everwood™ HD step (optional)

## *The Vanguard NXT Draws a crowd. Works the room.*

The best seat in the house? That is every seat in the Vanguard™ NXT. A flexible, open and family-friendly seating plan accommodates six in an inspired design.

This spa is a study of form and function, with 38 jets thoughtfully positioned to soothe stress, target hard-working muscles and promote well-being. Once you own this spa, you will wonder why you did not buy it sooner! Your personal wellness haven awaits.

*See detailed specifications for the Vanguard NXT on page 21.*



*Vanguard NXT shell shown in Alpine White.*



# JETSETTER NXT

Seating for 3 | 22 jets | Lounge



## *The Jetsetter NXT Supreme spa. Small space.*

For the elegant design and sophistication of a Highlife® Collection NXT spa without a large footprint, choose the Jetsetter™ NXT.

The more compact Jetsetter can easily be integrated into smaller patios, gardens, and decks, yet features all of the extraordinary design elements of the NXT Collection, including our exclusive wireless remote. Perfect for small families or empty nesters, the Jetsetter features a full, reversible lounge seat with our patented Moto-Massage DX jet at one end and a targeted and ultra-powerful FootStream™ jet at the other.

*See detailed specifications for the Jetsetter NXT on page 21 .*

### *Exclusive Features and Options*

- Moto-Massage™ DX jet
- Wireless touchscreen remote control
- 100% no-bypass filtration
- Dishwasher-safe Tri-X™ filters
- Comprehensive Energy Smart™ system
- Programmable exterior lighting
- ACE® salt water system (optional)
- Wireless sound system (optional)
- NXT or Everwood™ HD step (optional)



*Jetsetter NXT shell shown in Platinum.*

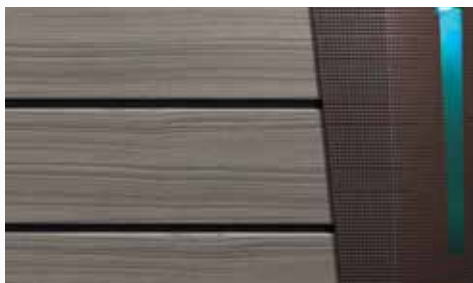


## Contemporary Cabinet and Shell Design

The colour, finish, and materials experts at Designworks, a BMW Group Company helped us carefully select a distinctive palette of cabinet, shell and cover colour options.

### Everwood HD

This high-definition cabinet offers a rich wood grain finish, along with the low maintenance and durability of our original Everwood™. NXT corners are moulded in complementary shades to accent each cabinet colour.



Monterey Grey/Charcoal



Teak/LaPaz



Mocha/LaPaz

	GRANDEE™ NXT	ENVOY™ NXT	ARIA™ NXT
<b>Seating Capacity (adults)</b>	7	5	5
<b>Dimensions</b>	254 x 231 x 97 cm	236 x 231 x 97 cm	221 x 221 x 91 cm
<b>Water Capacity (l)</b>	1,700	1,475	1,225
<b>Weight dry (kg)</b>	425	375	315
<b>Weight filled* (kg)</b>	2,685	2,250	1,940
<b>Stainless Steel Jets (Total)</b>	43	43	35
Moto-Massage™ DX jets	2 (4)	1 (2)	1 (2)
SoothingStream™ jets	2	2	2
FootStream™ jets	3	3	2
Rotary Hydromassage jets	2	2	2
Directional Hydromassage jets	2	3	5
HydroStream™ jets		10	4
Rotary Precision™ jets		2	
Directional Precision™ jets	30	19	18
<b>Entertainment Options (Optional)</b>			
Wireless TV	•	•	•
Wireless Bluetooth® Sound System	•	•	•
<b>Tranquility Mode</b>			
BellaFontana™	•	•	•
Luminescence™ multi-colour four-zone	•	•	•
<b>Jet Pump</b>			
WaveMaster™	9000 + 9200	9000 + 9200	9000 + 8200
HP continuous duty	2.5 + 2.5	2.5 + 2.5	2.5 + 2.0
HP breakdown torque	5.2 + 5.2	5.2 + 5.2	5.2 + 4.0
<b>Filtration</b>			
Equivalent filtration area, Top Loading (m²)	30	30	30
Number of Tri-X™ filters	5	5	5
<b>Electrical</b>			
230V - 50 Hz	20 A	20 A	20 A
Other Configurations**	•	•	•
<b>Cover lifters (Optional)</b>			
CoverCradle™, CoverCradle II, UpRite™ or Lift 'n Glide™	•	•	•

\* Includes water and adults weighing 80 kg each

\*\* Depending on local electrical circumstances



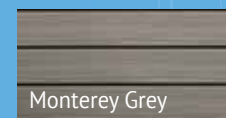
## VANGUARD™ NXT    JETSETTER™ NXT

<b>Seating Capacity (adults)</b>	6	3
<b>Dimensions</b>	221 x 221 x 91 cm	213 x 165 x 84 cm
<b>Water Capacity (l)</b>	1,275	800
<b>Weight dry (kg)</b>	315	220
<b>Weight filled* (kg)</b>	2,070	1,260
<b>Stainless Steel Jets (Total)</b>	38	22
Moto-Massage™ DX jets	2 (4)	1 (2)
SoothingStream™ jets	2	
FootStream™ jets	2	1
Rotary Hydromassage jets	2	2
Directional Hydromassage jets	1	1
HydroStream™ jets		4
Rotary Precision™ jets		
Directional Precision™ jets	27	12
<b>Entertainment Options (Optional)</b>		
Wireless TV	•	•
Wireless Bluetooth® Sound System	•	•
<b>Tranquility Mode</b>		
BellaFontana™	•	
Luminescence™ multi-colour four-zone	•	•
<b>Jet Pump</b>		
WaveMaster™	9200 + 9000	9000
HP continuous duty	2.5 + 2.5	2.5
HP breakdown torque	5.2 + 5.2	5.2
<b>Filtration</b>		
Equivalent filtration area, Top Loading (m²)	30	18
Number of Tri-X™ filters	5	3
<b>Electrical</b>		
230V - 50 Hz	20 A	16 A
Other Configurations**	•	•
<b>Cover lifters (Optional)</b>		
CoverCradle™, CoverCradle II, UpRite™ or Lift 'n Glide™	•	•

\* Includes water and adults weighing 80 kg each

\*\* Depending on local electrical circumstances

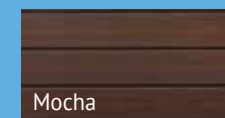
## Everwood™ Choices & Spa Shell Colours



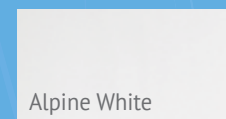
Monterey Grey



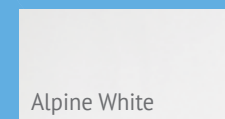
Teak



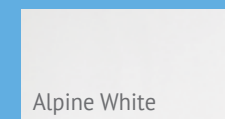
Mocha



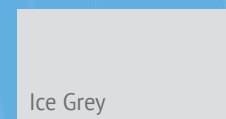
Alpine White



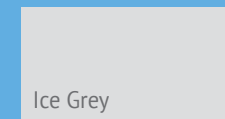
Alpine White



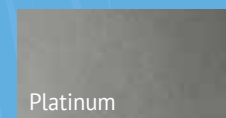
Alpine White



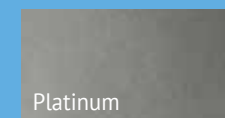
Ice Grey



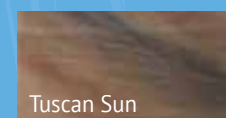
Ice Grey



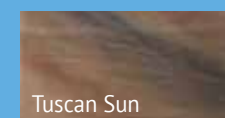
Platinum



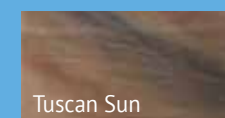
Platinum



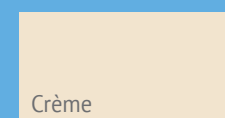
Tuscan Sun



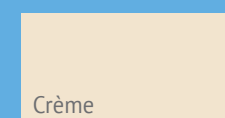
Tuscan Sun



Tuscan Sun



Crème



Crème



Desert



Desert

# *The Absolute Best Hot Tub Ownership Experience™*

As the industry leader, we are the only hot tub brand to sell over 1 million spas—which means there are more Hot Spring® spas in gardens than any other brand. We have built our reputation on quality, but you do not have to take our word for it. We invite you to read what Hot Spring owners have to say about their experience at [HotSpring.com/Reviews](https://HotSpring.com/Reviews).

Since we opened for business 40 years ago, we have built the most extensive network of genuine, passionate and helpful retailers in

the industry. When you choose Hot Spring, you can expect leading-edge innovation in spa features and design, as well as unparalleled customer care before, during and long after your purchase.

Hot Spring spas are made by Watkins Wellness, which is a part of Masco Corporation—a Fortune 500 company whose family of quality home products includes:



# MASCO





### *Committed to Quality*

We are passionate about making the world's best hot tubs and are consistently recognised for outstanding quality and value.



We have received trade-certified recognition by Spasearch.org for ten consecutive years – every year since the certification was introduced.



Our quality system is certified by Lloyd's Register in accordance with ISO9001:2008, the highest international standard for design and manufacturing excellence.



Hot Spring is the only brand that has built and sold more than one million hot tubs.





**MIX**  
From responsible  
sources  
**FSC® C012095**

*We print our brochures on only Forest Stewardship Council (FSC) paper. Printed in the EU on recycled paper that contains 10% post-consumer waste and is FSC certified. FSC ensures that the paper in our brochures contains fiber from well-managed and responsibly harvested forests. Please pass this catalog on or recycle again.*



***Watkins Wellness reserves the right to change its products without notice.***

The highest quality standards in design and manufacturing. Watkins Wellness is proud to be associated with the following agencies, affiliations and foundations:

© 2018 Watkins Wellness, 1280 Park Center Drive, Vista, California 92081, USA. All rights reserved. Specifications, colours, and surface materials subject to change without notice. Not all features are available on all products. Printed in the EU. Hot Spring, Highlife, Grandee, Envoy, Aria, Vanguard, Jetsetter, The Absolute Best Hot Tub Ownership Experience, Every day made better, ACE, BellaFontana, Comfort Control, Energy Smart, Everwood, HydroStream, IQ 2020, Jet-Clutser, FootStream, Luminescence, Moto-Massage, No-Fault, Nobody Backs You Better, Precision, Quartet, SilentFlo 5000, Smartlet, SoothingStream, Tri-X, and WaveMaster are trademarks of Watkins Wellness. Hansgrohe and Huppe are registered trademarks. All 230v models must be installed by a licensed electrician in accordance with local codes. US Patents #5,647,736; #5,724,478; #5,742,953; #5,810,257; #5,810,262; #5,819,332; #5,924,850; #5,943,711; #6,381,766; #6,435,691; #6,596,951; #6,621,985; #6,859,952; #6,873,793; #6,976,636; #7,162,752; #7,219,690; #7,472,430; #7,472,431; #8,273,254; #8,266,736; #8,465,650; D518896; D531729; D620599; D624657; D634019; D634021 and other patents pending.